

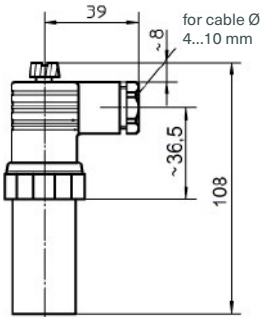
Case Configurations, Dimensional Data (mm) and Weight (kg), Process Connections

Standard Case

without code letters

Plug connector DIN EN 175301-803

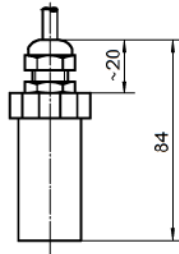
ventilation via
plug screw fitting
degree of protection IP65



Weight
for standard case
with temperature decoupler

Cable connection

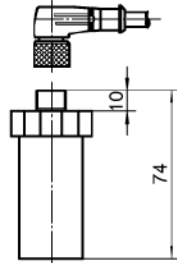
ventilation via cable
degree of protection IP67



approx. 0.200 kg
+ approx. 0.050 kg

Circular plug connector with screw plug

ventilation via cable
degree of protection IP65



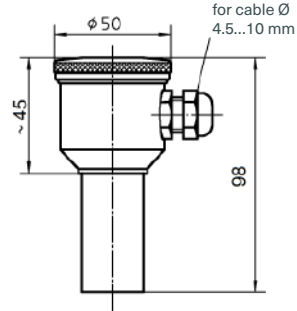
Field Housing

code letters FG

Screwed cable gland M 16x1.5

ventilation via sinter filter,
degree of protection IP65

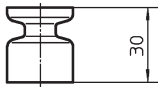
option
ventilation via cable, IP67



Weight
for field housing
with temperature
decoupler

approx. 0.460 kg
+ approx. 0.050 kg

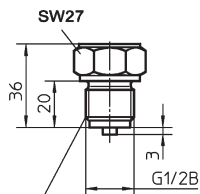
Options



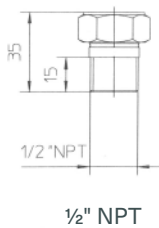
temperature decoupler for process temperatures up to +140 °C

Process Connections

PTMEx (piezo)

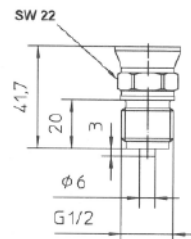


connection according to
DIN EN 837-1

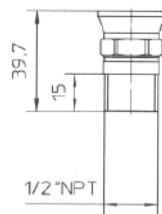


1/2" NPT

PTMEx (thin film)

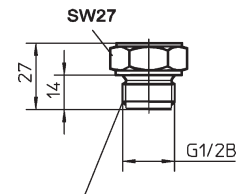


standard
G 1/2 B DIN EN 837-1

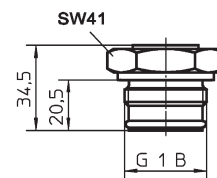


1/2" NPT

PTMExFB



connection according to
DIN 3852 Form A



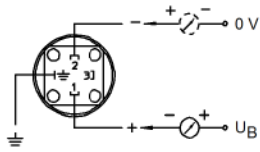
with O-ring NBR

Wiring Diagrams, Accessory

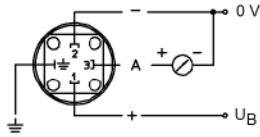
Wiring Diagrams

Angular plug

2-wire connection



3-wire connection

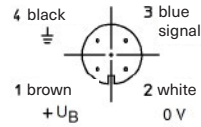
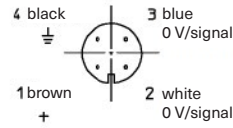


Cable connection

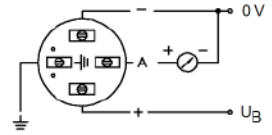
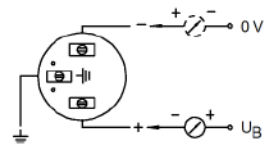
brown + U_B
white \perp earth
green 0 V/signal

brown + U_B
white \perp earth
green 0 V
black signal

Circular plug connector

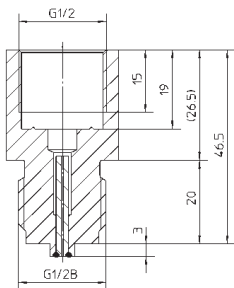


Field housing screwed cable gland M 16x1.5



Accessory

Flame arrester "Adapt FS" (flame penetration protection) variant 1 according to data sheet 11001, made of stainless steel 316Ti (1.4571)/ cannula stainless steel 304 (1.4301), process connection G 1/2 B according to DIN EN 837-1, with EU-Type Examination Certificate PTB 12 ATEX 4001 X according to standard 2014/34/EU, marking of this protection system: II G IIC



Ordering Information, Options

Basic Model	Pressure Transmitter	PTMEx			
Construction type	diaphragm placed inside	without code letters			
	diaphragm flush welded	FB			
Case	standard version	without code letters			
	field housing rugged version, screwable cover ring with O-ring sealing for externally accessible adjustable potentiometers, screwable cap for connection chamber with O-ring thread protector, connecting terminals 4 mm ² , screwed cable gland M 16x1.5 for cable Ø 4.5 – 10 mm	FG			
Medium temperature	standard version (up to +80 °C)	without code letters			
	with temperature decoupler (-10 / +140 °C)	TE			
Ignition protection type	intrinsically safe equipment, category ib	ib			
Temperature class	T4 (max. surface temperature of the device ≤ 135 °C)	T4			
	T5 (max. surface temperature of the device ≤ 100 °C)	T5			
	T6 (max. surface temperature of the device ≤ 85 °C)	T6			
Pressure type	overpressure	without code letters			
	absolute pressure	(a)			
Pressure range	overpressure		absolute pressure	overload limits²⁾	
	0 – 1 bar	-1 / 0 bar	0 – 1 bar abs	3 bar	
	0 – 1.6 bar	-1 / +0.6 bar	0 – 1.6 bar abs	10 bar	
	0 – 2.5 bar	-1 / +1.5 bar	0 – 2.5 bar abs	20 bar	e.g. -1 / +3 bar
	0 – 4 bar	-1 / +3 bar	0 – 4 bar abs	60 bar	
	0 – 6 bar	-1 / +5 bar	0 – 6 bar abs	100 bar	
	0 – 10 bar	-1 / +9 bar	0 – 10 bar abs	250 bar	
	0 – 16 bar	-1 / +15 bar	0 – 16 bar abs	750 bar	
	0 – 25 bar		0 – 25 bar abs		
	0 – 40 bar				
	0 – 60 bar ¹⁾				
	0 – 100 bar ¹⁾				
	0 – 160 bar ¹⁾				
	0 – 250 bar ¹⁾				
0 – 400 bar ¹⁾					
Output signal	standard	4...20 mA, 2-wire			4...20 mA
	option	0...20 mA, 3-wire			0...20 mA
Process connection	standard	G ½ B			G ½ B
	options	G 1 B			G 1 B
		½" NPT according to DIN EN 837-1			½" NPT
		M 22x1.5			M 22x1.5

These options are to be ordered in written form. Please contact us to ensure compatibility when combining options.

Cable connection	IP67, cable ventilation; circular plug connector with screw plug M 12, IP65
Diaphragm with 6 µm gold coating	for hydrogen applications (pressure range max. 0 – 160 bar)
Certificate	for hydrogen resistance according to EN 10204-3.1
Connection to zone 0	using our screw adapter "Adapt FS"; connection to zone 0 by using a correspondingly approved diaphragm seal upon request
Example	PTMEx ib T6 (r) -1 / +3 bar, 4...20 mA

Special Versions: Please describe your requirements in cleartext!

¹⁾ accuracy ±0.3% FS

²⁾ for intermediate pressure ranges upon request