

Diaphragm Seal

For homogenising machines

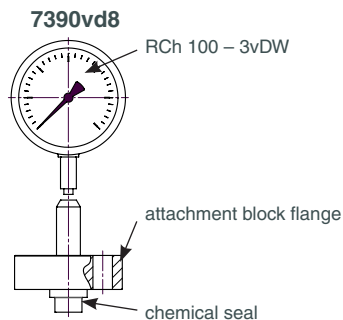
MDM 7390v

Information on applications, features, metrological influences such as temperature, level difference, floating time and others can be found in model overview 7000. Furthermore, you will find information on other chemical seal versions.

Construction

The chemical seal model 7590vd8 has an orifice d8 as instrument connection for welding to a pressure gauge, e.g. RCh 100 – 3vDW, or capillary line.

Leakage cannot occur at the welded connection of pressure gauge/chemical seal/capillary line and the filling port that is not accessible externally. After disassembly, the parts can be easily cleaned-out-of-place (COP).



Standard Versions

Chemical Seal and Process Connection

Stainless steel 316L (1.4435)

Instrument Connection

Orifice d8

Diaphragm

Stainless steel 316L (1.4435) flush welded with chemical seal, helium leak detection up to 10^{-9} mbar l/s
Effective diaphragm diameter dM, see tables on page 2 ff.

Process Connection

Versions see table page 2

Attachment Block Flange

Stainless steel 316L

Nominal Pressure

PN 1600

Pressure Ranges

0 – 100, 0 – 160, 0 – 250, 0 – 400, 0 – 600, 0 – 1000, 0 – 1600 bar

Filling

Glycerin

Options

- Calculation of the temperature-related additional error for the entire pressure measuring system
- Version pressure transmitter DMU with analogue output 4...20 mA (not autoclavable)

Special Versions (Upon Request)

- Reinforced attachment block flange
- Attachment block flange with 4 orifices or union nut
- Other instrument connections (without attachment)
- Version in special dimensions

Accessory

Capillary line: see data sheet 7.7002

Process connection parts, screws and sealings are not part of the supply range

Mounting/Filling/Certificates

Information concerning mounting, filling and on certificates are available upon request.

Ordering Information Chemical Seals

Please regard our detailed ordering information

- in model overview 7000
- in the check lists for pressure measuring instruments with chemical seal
- in the respective data sheets of the required pressure measuring instrument

and add the information for the respective chemical seal:

Model 7390

Instrument connection vd8

The reference temperature is +20 °C (+68 °F). Please specify if an operating temperature (t_A) deviating from +20 °C (+68 °F) is required (dial inscription $t_{A,\dots}$). The COP cleaning temperature for the autoclavable version is max. +134 °C (+273.2 °F).

Example:

Pressure gauge

RCh 100 – 3vDW

Chemical seal

MDM 7390vd8

Options, if necessary

t_A +80 °C

ARMANO

ARMANO Messtechnik GmbH

Location Beierfeld

Am Gewerbepark 9 • 08344 Grünhain-Beierfeld
Tel.: +49 3774 58 – 0 • Fax: +49 3774 58 – 545
mail@armano-beierfeld.com

Location Wesel

Manometerstraße 5 • 46487 Wesel-Ginderich
Tel.: +49 2803 9130 – 0 • Fax: +49 2803 1035
mail@armano-wesel.com

www.armano-messtechnik.com

7390

06/19

Connection, Dimensional Data and Weight

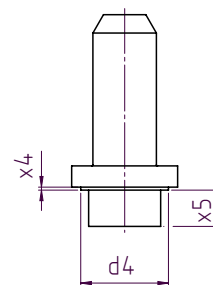
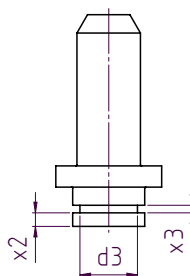
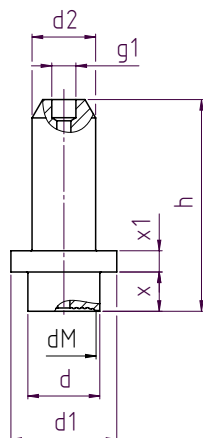
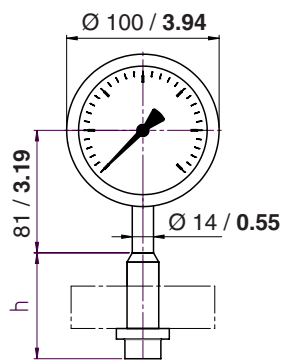
Chemical Seals

complete view

MDM 7390.56, MDM 7390.57

MDM 7390.23

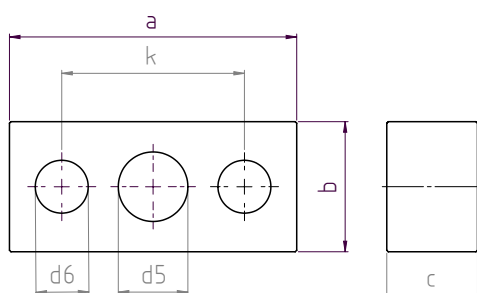
MDM 7390.53



Dimensional Data (mm/inch) and Weights (kg/lb)

Type	d	d1	d2	d3	d4	dM	h	g1	x	x1	x2	x3	x4	x5	Weight
7390.56	23.8 0.94	33 1.3	21 0.83	-	-	21 0.83	99 3.9	d8	13 0.51	7 0.28	-	-	-	-	0.29 0.64
7390.57	23.8 0.94	40 1.57	21 0.83	-	-	21 0.83	99 3.9	d8	13 0.51	7 0.28	-	-	-	-	0.31 0.68
7390.23	24 0.94	34.8 1.37	21.5 0.85	18.8 0.74	-	21 0.83	67 2.64	d8	20 0.79	7.5 0.3	5 0.2	4.4 0.17	-	-	0.21 0.46
7390.46	24 0.94	28.3 1.11	21 0.83	18.8 0.74	-	21 0.83	65 2.56	d8	18 0.71	7.5 0.3	5 0.2	4.4 0.17	-	-	0.18 0.4
7390.53	26 1.02	37.5 1.48	31 1.22	-	34 1.34	21 0.83	86 3.39	d8	11 0.43	10 0.39	-	-	1 0.04	10 0.39	0.49 1.08

Attachment Block Flange



Dimensional Data (mm/inch) and Weights (kg/lb)

Type	a	b	c	d5	d6	k	Weight
ARMANO	95 3.74	43 1.69	28 1.1	24 0.94	17.5 0.69	60.5 2.38	0.69 1.52
T17610	95 3.74	43 1.69	30 1.18	23 0.91	17.5 0.69	60.4 2.38	0.71 1.57
T17612	115 4.53	45 1.77	42 1.65	23 0.91	22 0.87	75 2.95	1.32 2.91
T17620	95 3.74	43 1.69	30 1.18	23 0.91	22 0.87	60.4 2.38	0.68 1.5