

Comparison Pump

Hydraulic version in a case
Pressure range 0 – 2500 bar

PS 2500-G

Application

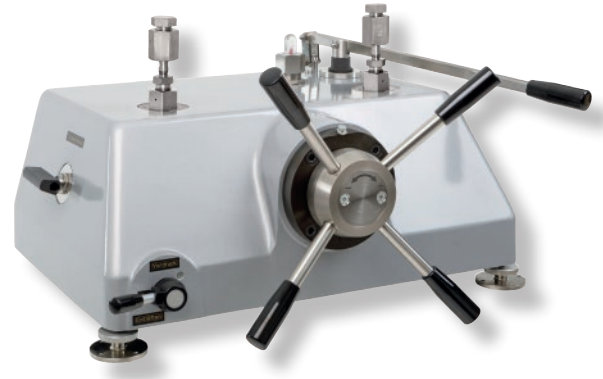
The comparison pump model PS 2500-G is a pressure generator and used for comparative measurements. It is suitable for testing and adjusting pressure measuring devices.

The model is applicable for pressure ranges from 0 to 2500 bar. Acid-free, thin oil is used as medium.

The spindle pump with star handle and the additional hand pump serve to generate the pressure. An external compressed air supply of max. 10 bar is required for the admission pressure. The test item is compared to a pressure measuring device with higher accuracy (e.g. model overview 2000 Test Gauges, model overview 10000 Calibration Technology).

Comparison pumps in a case are suited for continuous operations, e.g. in test shops. Additionally, the instrument connections are provided with filters to avoid contamination of the pump pipe system (see schematic drawing, page 2).

barotec[®]
KALIBRIERTECHNIK



Standard Versions

Construction Type

Case version

Medium

Special oil

Pressure Ranges

p_{min} (operating volume ≤ 0.1 litre)	0 bar
p_{max} (operating volume ≤ 0.1 litre)	2500 bar
Required admission pressure	6 bar

Connection

2 high pressure connections $\frac{3}{8}$ " HPF-M 20x1.5, each with 2 adapters for G $\frac{1}{2}$ " and M 20x1.5

Connection for External Compressed Air Supply

Plug connection (Prestolock) for PA hose N 4x1 and an adapter for hose N 6x1

Case

All parts mounted in an aluminum case, grey enamelled (self-supporting cover), 3 adjustable feet

Case Dimensions (L x W x H)

700 x 560 x 310 mm (27.56 x 22.05 x 12.2")

Piston and Cylinder

Hardened steel

Spindle Nut

Steel

Weight

Approx. 45 kg (99.21 lb)

Temperature Range

15 °C to 35 °C (59 °F to 95 °F)

Options

- Hose N 4x1 for Prestolock
- Adapter from hose 4x1 to $\frac{1}{4}$ " NPT male
- Air drive liquid pump up to max. 1000 bar (instead of hand pump)
- Connection adapter for $\frac{1}{2}$ " NPT (union nut)

Scope of Delivery

The delivery includes – in addition to the comparison pump:

- 1 operating instruction
- 1 l special oil
- 2 connections for G $\frac{1}{2}$ " (union nut)
- 2 connections for M 20x1.5 (union nut)
- 4 O-rings as spare parts
- 2 adapters for N 6x1 (admission pressure connection)

Ordering Information

Please specify in your order:

Basic model PS 2500-G (0 – 2500 bar)
Options see above

Example PS 2500-G
PS 2500-G with adapter from hose 4x1 to $\frac{1}{4}$ " NPT

ARMANO

ARMANO Messtechnik GmbH

Location Beierfeld
Am Gewerbepark 9 • 08344 Grünhain-Beierfeld
Tel.: +49 3774 58 – 0 • Fax: +49 3774 58 – 545
mail@armano-beierfeld.com

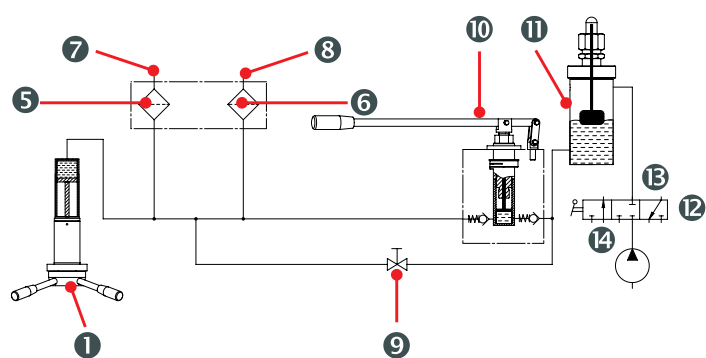
Location Wesel
Manometerstraße 5 • 46487 Wesel-Ginderich
Tel.: +49 2803 9130 – 0 • Fax: +49 2803 1035
mail@armano-wesel.com

www.armano-messtechnik.com

10157

03/23

Schematic Drawing



- ① Spindle pump with cylinder, piston, spindle and star handle
- ⑤ Filter
- ⑥ Filter
- ⑦ Connection for reference device
- ⑧ Connection for test item
- ⑨ Valve "Pressure compensation / Druckausgleich"
- ⑩ Hand pump
- ⑪ Reservoir for the medium
- ⑫ Change-over valve for external admission pressure (functions: "Admission Pressure / Vordruck", "Closed / Zu", "Vent / Entlüften")
- ⑬ "Connection admission pressure / Anschluss Vordruck"
- ⑭ "Ventilation admission pressure / Entlüftung Vordruck"